



Description:

NEEDLE VALVE LOCKOUT DEVICE

VLO-120822-a is a lockout/tagout device designed to prevent unauthorised operation of instrumentation valves.

It is designed to protect needle valves from unauthorised or accidental use. It's unique design ensures that valves cannot be tampered with or damaged when the device is locked. Locking is achieved by applying a safety padlock (not included)

It is made from sintered Nylon. It is tolerant to the worst environmental conditions including salt mist spray and extreme dusty environments. By locking with a padlock, this device can form an integral role in your lockout/tagout procedures.

Features

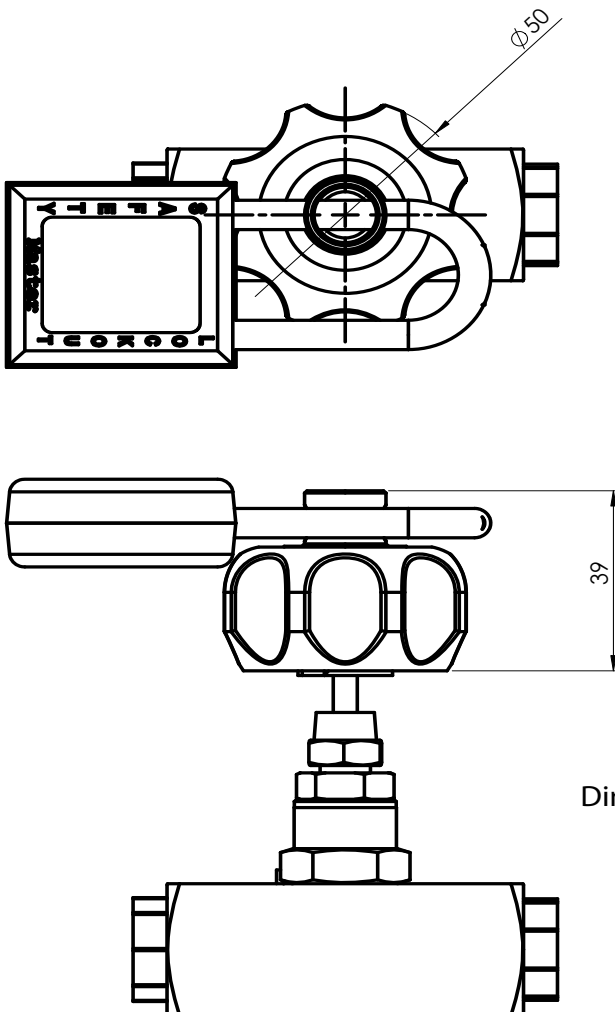
- Prevent tampering
- Safeguard against vandalism
- Safeguard against unauthorised used.

Technical

Device includes an adaptor designed to fit onto your valve stem after removing the existing handle or knob

Material

Body - Sintered Nylon
Adaptor - Brass



Dimensions in mm



Global Headquarters

North America & Canada

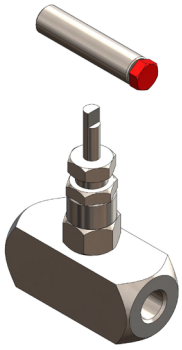
Total Lockout (Safety) Ltd
Unit 10 Warner Drive
Springwood Industrial Estate
Braintree, Essex, CM7 2YW
United Kingdom

Total Lockout (Safety) LLC
4500 140th Avenue North
Suite 101
Clearwater, FL 33762
United States of America

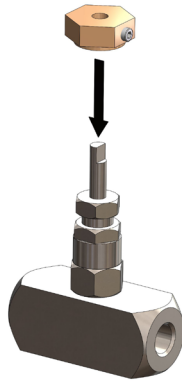
Tel: +44 (0)1376 325506
Fax: +44 (0)1376 347484
E-mail: sales@totallockout.com

Tel: (727) 608-4325
Fax: (727) 538 4237
E-mail: sales@totallockout.com

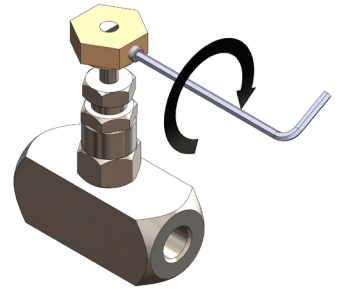
Fitting Instructions



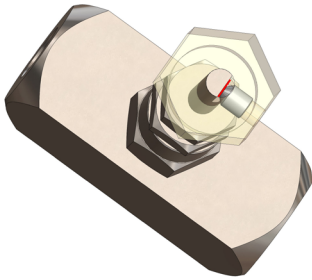
1. Remove valve handle.



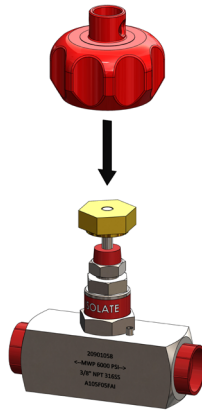
2. Place adaptor over valve stem.



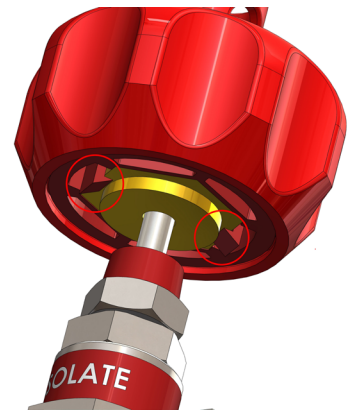
3. Secure the adaptor in place using the allen key.



4. Ensure the grub screw engages on the drive surface of the valve stem

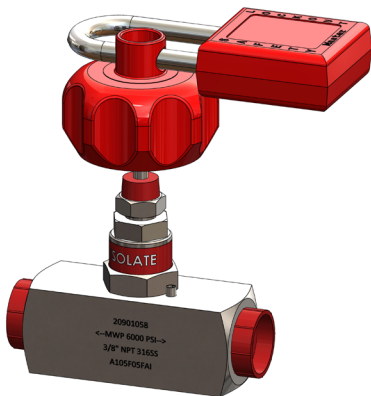


5. Push the lock assembly onto the adaptor

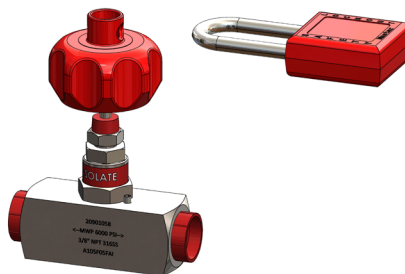


6. Ensure the clip engages below the brass adaptor.

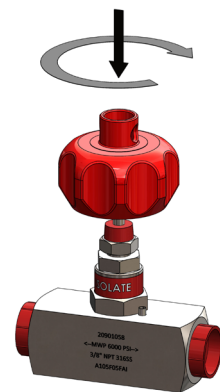
Operating Instructions



7. Lock the device with a safety padlock



8. Remove the padlock to operate the valve.



9. Press down on the knob and turn to operate the valve in the normal way