

Technical Description:

Car seals are a simple device for locking valves in the OPEN or CLOSED positions. Ideal for long term uses, each car seal is self locking so once the cable passes through the body the only way to remove it is by cutting. All seals are individually numbered to allow easy identification.

Materials:

- Body: Aluminium
- Cable: Stainless Steel, Multi-Strand

Colours (Anodized):

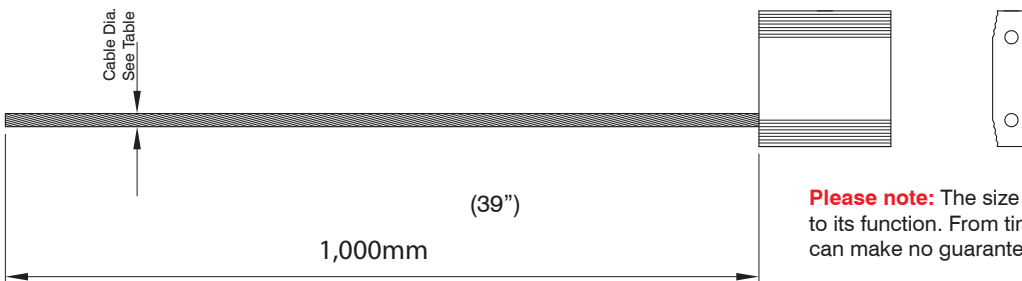
- Red
- Orange
- Blue
- Green
- Black
- Yellow



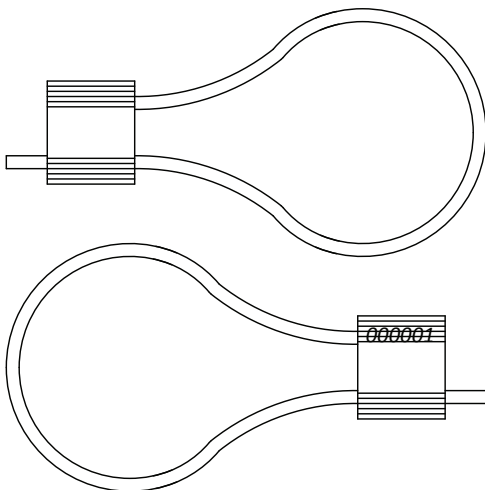
Please note: Car seal body colour is achieved through Electrolytic Passivation (anodizing). Variations in colour shading may occur between batches.

Load to Failure

- 530kgs (1168lbs) - Damage to cable
- 450kgs (992lbs) - No damage to cable



Please note: The size of the car seal body is not relevant to its function. From time to time the size may vary. We can make no guarantee of consistency of body size.



Part No.	Colour	Cable Dia.
CLO-1000/2.5PTRED	RED	2.5mm (3/32")
CLO-1000/2.5PTORJ	ORANGE	2.5mm (3/32")
CLO-1000/2.5PTBLU	BLUE	2.5mm (3/32")
CLO-1000/2.5PTGRN	GREEN	2.5mm (3/32")
CLO-1000/2.5PTBLK	BLACK	2.5mm (3/32")
CLO-1000/2.5PTYLW	YELLOW	2.5mm (3/32")
CLO-1000/3.5PTRED	RED	3.5mm (9/64")
CLO-1000/3.5PTGRN	GREEN	3.5mm (9/64")

South East Asia

Global Headquarters

North America & Canada

Total Lockout (Safety)
Level 36, Menara Citibank
165 Jalan Ampang
50450, Kuala Lumpur
Malaysia

Total Lockout (Safety) Ltd
Unit 10 Warner Drive
Springwood Industrial Estate
Braintree, Essex, CM7 2YW
United Kingdom

Total Lockout (Safety) LLC
4500 140th Avenue North
Suite 101
Clearwater, FL 33762
United States of America



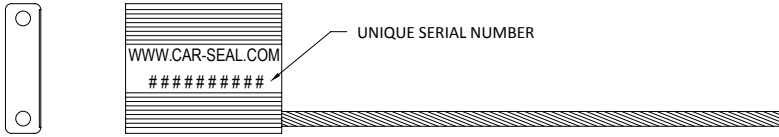


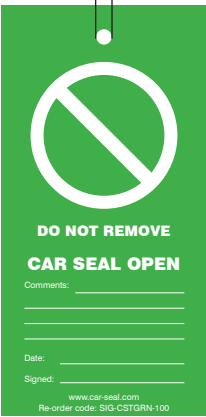
Tel: +603 2169 7022
E-mail: sales@totallockout.com

Tel: +44 (0)1376 325506
Fax: +44 (0)1376 347484
E-mail: sales@totallockout.com

Tel: (727) 608-4325
Fax: (727) 538 4237
E-mail: sales@totallockout.com



Car Seal Open Specification

<p>Product Code (Part No.)</p>	<p>CLO - 1000 / 2.5 PT GRN CLO - 1000 / 3.5 PT GRN</p> <p style="text-align: center;">CLO - 1000 / 2.5 PT GRN</p> <div style="display: flex; justify-content: space-around; text-align: center;"> <div style="width: 15%;">Product Group <small>(e.g. Cable Lock)</small></div> <div style="width: 15%;">Cable Length <small>(e.g. 1000mm)</small></div> <div style="width: 15%;">Cable Dia. <small>(e.g. 2.5mm)</small></div> <div style="width: 15%;">Locking Method</div> <div style="width: 15%;">Colour <small>(e.g. Green)</small></div> </div>
<p>Order Designation</p> <p>Standard</p> <p>Description</p>	<p>CAR SEAL OPEN</p> <p>MFG STD</p> <p>CABLE DIA./SIZE - 2.5MM OR 3.5MM</p> <p>CABLE LENGTH - 1000MM</p> <p>WITH SEAL TAG (OPTIONAL)</p> <p>SEAL BODY COLOUR - GREEN</p>
<p>Material</p>	<p>CABLE - STAINLESS STEEL, MULTI-STRAND</p> <p>SEAL BODY - ALUMINIUM, ANODIZED</p> <div style="text-align: center; margin-top: 20px;">  <p>UNIQUE SERIAL NUMBER</p> </div>
<p>Supp. Feature-1</p> <p>Supp. Feature-2</p>	<p>EACH CAR SEAL IS SUPPLIED WITH A UNIQUE SERIAL NUMBER</p> <p>EACH CAR SEAL CAN BE SUPPLIED WITH OPTIONAL TAG TO INDICATE 'CAR SEAL OPEN'</p> <p>CAR SEAL MATERIAL: 135GSM, NON TEAR SYNTHETIC 'SYNAPS'</p> <div style="display: flex; justify-content: space-around; align-items: flex-start; margin-top: 20px;"> <div style="text-align: center;">  </div> <div style="text-align: center;">  </div> <div style="text-align: center;">  <p>6.5mm (1/4")</p> </div> </div>

REV.	Date	Name	Description
1	9/18/2013	TH	Reduce Cable Diameter
2	20/12/2013	TH	Add Car Seal Tags
3	23/12/2013	TH	Remove Pack QTY Information
4	21/1/2014	TH	Add LTF Information
5	04/05/2018	TH	Remove Cable Head Dimensions. Add Colour & Head Size Disclaimer

The information provided in this document is for general guidance only. The specifications provided are from the manufacturers information. This document is not intended as a substitute for and is not to be used for determining the suitability or reliability of these products for specific user applications. It is the duty of any such user to perform the appropriate and complete risk analysis, evaluation and testing of the products with respect to the relevant specific application or use thereof. Total Lockout (Safety) Ltd shall not be responsible or liable for misuse of the information contained herein.

Car Seal Closed Specification

<p>Product Code (Part No.)</p>	<p>CLO - 1000 / 2.5 PT RED</p> <p>CLO - 1000 / 3.5 PT RED</p> <div style="text-align: center; margin-top: 20px;"> <p>CLO - 1000 / 2.5 PT RED</p> </div>
<p>Order Designation</p> <p>Standard</p> <p>Description</p>	<p>CAR SEAL CLOSED</p> <p>MFG STD</p> <p>CABLE DIA./SIZE - 2.5MM OR 3.5MM</p> <p>CABLE LENGTH - 1000MM</p> <p>WITH SEAL TAG (OPTIONAL)</p> <p>SEAL BODY COLOUR - RED</p>
<p>Material</p>	<p>CABLE - STAINLESS STEEL, MULTI-STRAND</p> <p>SEAL BODY - ALUMINIUM, ANODIZED</p> <div style="text-align: center; margin-top: 20px;"> <p>UNIQUE SERIAL NUMBER</p> </div>
<p>Supp. Feature-1</p> <p>Supp. Feature-2</p>	<p>EACH CAR SEAL IS SUPPLIED WITH A UNIQUE SERIAL NUMBER</p> <p>EACH CAR SEAL CAN BE SUPPLIED WITH OPTIONAL TAG TO INDICATE 'CAR SEAL CLOSED'</p> <p>CAR SEAL MATERIAL: 135GSM, NON TEAR SYNTHETIC 'SYNAPS'</p> <div style="display: flex; justify-content: space-around; align-items: flex-start; margin-top: 20px;"> <div style="text-align: center;"> </div> <div style="text-align: center;"> </div> <div style="text-align: center;"> <p>6.5mm (1/4")</p> </div> </div>

REV.	Date	Name	Description
1	9/18/2013	TH	Reduce Cable Diameter
2	20/12/2013	TH	Add Car Seal Tags
3	23/12/2013	TH	Remove Pack QTY Information
4	21/1/2014	TH	Add LTF Information
5	04/05/2018	TH	Remove Cable Head Dimensions. Add Colour & Head Size Disclaimer